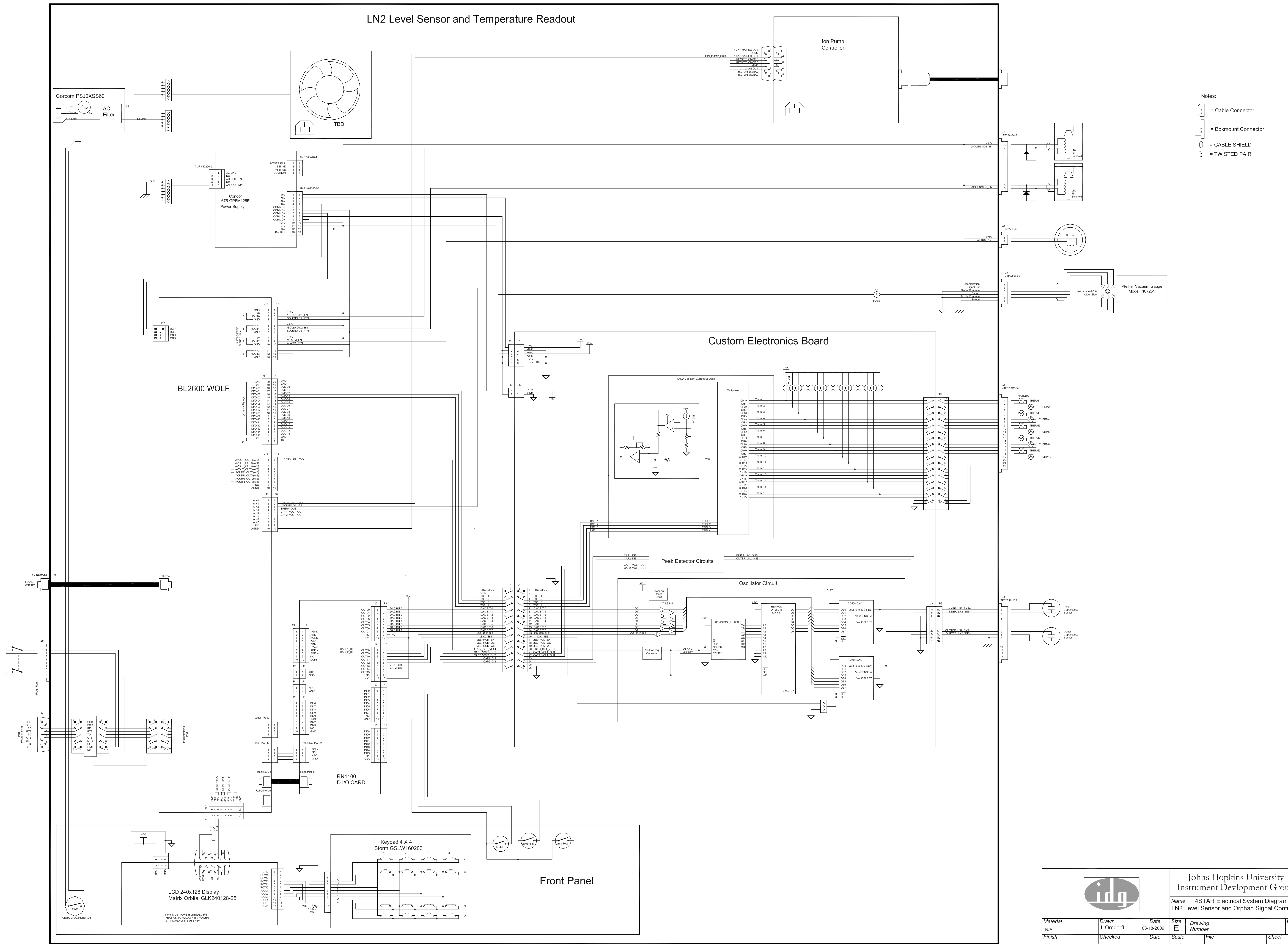


Rev-A 2/25/2008 Swapped receive and transmit lines on BL2500 to LCD serial interface
 Added -15V feed to Custom Electronics Board
 Added +5V to +K1 and +K2 on J2 and J3 of the RN100 board
 Rev-B 3/18/2009 Moved Buzzer to HOUT2
 Added 2nd solenoid to HOUT1

LN2 Level Sensor and Temperature Readout



- Notes:
- = Cable Connector
 - = Boxmount Connector
 - = CABLE SHIELD
 - = TWISTED PAIR

		Johns Hopkins University Instrument Development Group			
		Name 4STAR Electrical System Diagram LN2 Level Sensor and Orphan Signal Controller			
Material N/A	Drawn J. Ondorff	Date 03-18-2009	Size E	Drawing Number B	Rev B
Finish N/A	Checked	Date	Scale N/A	File	Sheet 1 of 1

Now: MUST HAVE EXTENDED PIS
 WIREBOND TO ALLOW +5V POWER
 STANDARD UNITS USE -5V